

TSS100 DTV DELAY SERVER

- Delay any DVB-ASI stream (up to 75 Mbits/sec)
- Up to 13 hours of delay time
- 100BaseT Ethernet control port
- Serial Machine Control

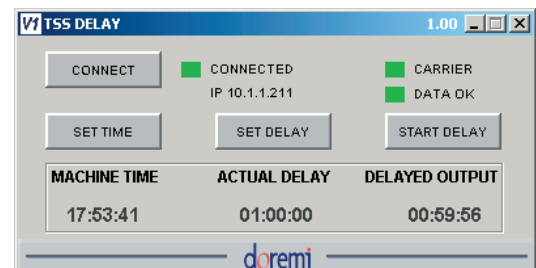


The TSS-100 from Doremi Labs performs time delay of any DVB/ASI digital television format up to 75 Mbits/sec, including High Definition 1080i, 720p, 480p and standard definition 525 and 625 line video.

A DVB-ASI signal fed to the TSS-100 can be delayed up to 13 hours. All video, audio and ancillary data on the signal are fully preserved.

A simple Java based user interface communicates with the TSS-100 via 100BaseT Ethernet. The interface allows the user to set the desired delay time and start the delay process.

The TSS-100 also accepts standard machine control commands via its serial RS-422 connector.



User Interface



doremi

Doremi Labs, Inc. Headquarters Burbank, California USA - tel 818 562-1101 - www.doremilabs.com
Doremi Labs, Europe Sophia Antipolis, France - tel +33 (0)492 952 830 - www.doremilabs.fr
Doremi Labs LLC - Japan Setagaya-Ku, Japan - tel +81 3 3424 6447- www.doremilabs.jp