

VTR2MCS Automated VTR Control for MCS & V1 Ingest

VTR2MCS provides automated VTR control for MCS and V1 video servers. The recording from a source VTR is controlled via RS422* or IEEE1394** Recording instructions can be automated via an Edit List (EDL) that can be created within the VTR2MCS software or imported from an ASCII CSV file.

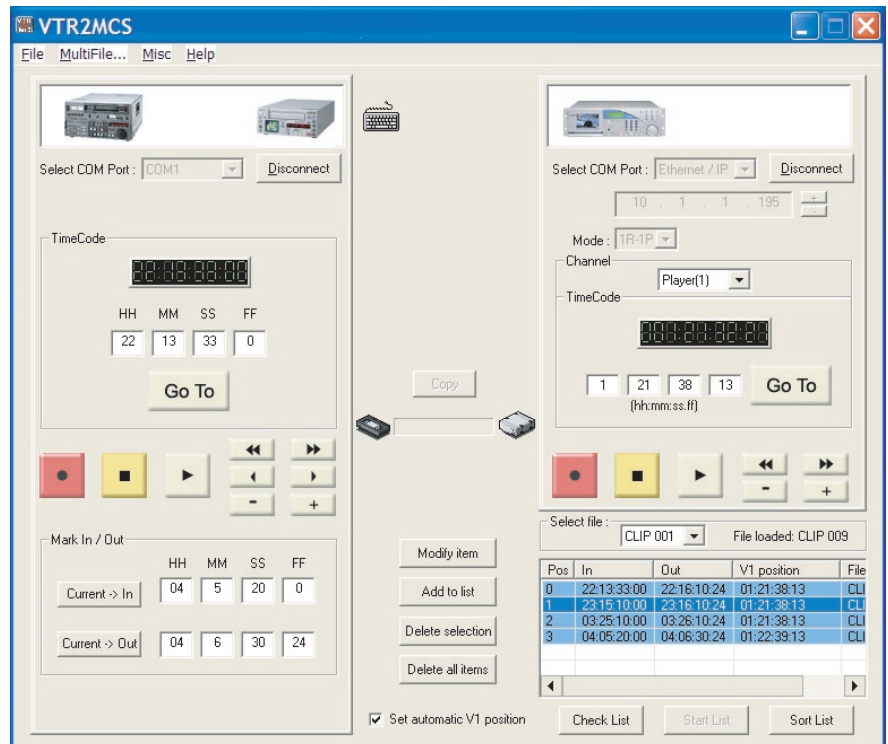
The ingest destination is the selected V1 or MCS file (clip) and timecode position. VTR2MCS also features basic transport controls for the source VTR and the destination V1 or MCS. Keyboard shortcuts for frequently used commands are also provided.

(*) Protocol support BVW75, DVW500, DSR80

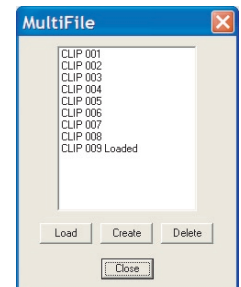
(**) Protocol support DSR80

Type a single clip (In/Out) or create a complete Edit List (EDL), to define the recording from the VTR.

The destination on the V1 or MCS (File and timecode) must also be defined. Automatic ingest is activated by a single button; COPY.



LIVE2MCS provides V1 and MCS file management features such as load, create and delete files (clips) and keyboard shortcuts for basic transport controls.



System Requirements

MCS Server or V1 with Multi-File system
(firmware 4.40 and above)
Windows XP or NT workstation
Ethernet connection to V1 or MCS

