



HD VIDEO DISK RECORDERS

**HD VTR
Replacement**

**HD Video Player for
High-Res Displays**

**Dual-Channel Playback
for 3D Video, Video + Key
and Super Widescreen**



V1 high definition video disk recorders offer the superior resolution of high definition video in a compact stand alone package. Record and playback SD or HD video, compressed or uncompressed, on internal removable drives.

V1-HD Features JPEG2000 video compression up to 300 Mbits/sec for visually lossless recording. HD video compression allows for over twelve hours of high quality video recording on just one removable hot-swap drive.

V1-UHD Features uncompressed HD video recording for applications where the image quality cannot be compromised. The V1-UHD is also available with JPEG2000 compression capability.

HIGHLIGHTS

Record SD and HD video compressed and uncompressed

High quality JPEG2000 compression up to 300 Mbits/sec

Store multiple SD and HD video files in any format compressed or uncompressed

Create video clips, loops and play lists from the front panel

Smooth fast and slow motion playback

Video transitions fade, wipe, and dissolve

Frame accurate control via RS-422 or Ethernet using standard control protocols

Transfer video files and still images via Ethernet

2k Dual-link 4:4:4 recording 24p/24psf at 10 or 12bit



V1 HD



V1 UHD

Uncompressed Recording	N/A	✓
JPEG2000 Compression 15-300Mbs	✓	Option
Video + Key, 3D, and super widescreen	✓	Option
Dual Link HD-SDI 4:4:4	✓	Option

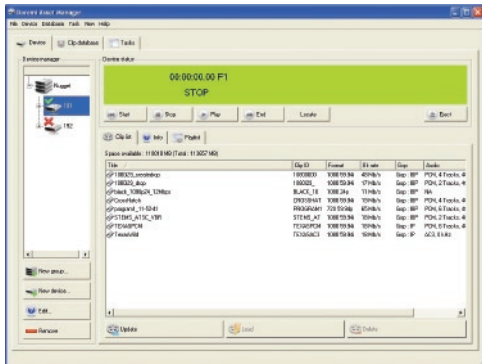


HD VIDEO DISK RECORDERS

V1-HD Dual-Channel Playback for Video+Key, 3D Video and Super-Widescreen

Dual-channel playback provides for locked playback of two HD-SDI video streams. This makes the V1-HD an ideal playback device for 3D Video, Super-Widescreen and Video+Key applications. In addition, 4k resolution playback is now possible with just two synchronized V1-HD decks.

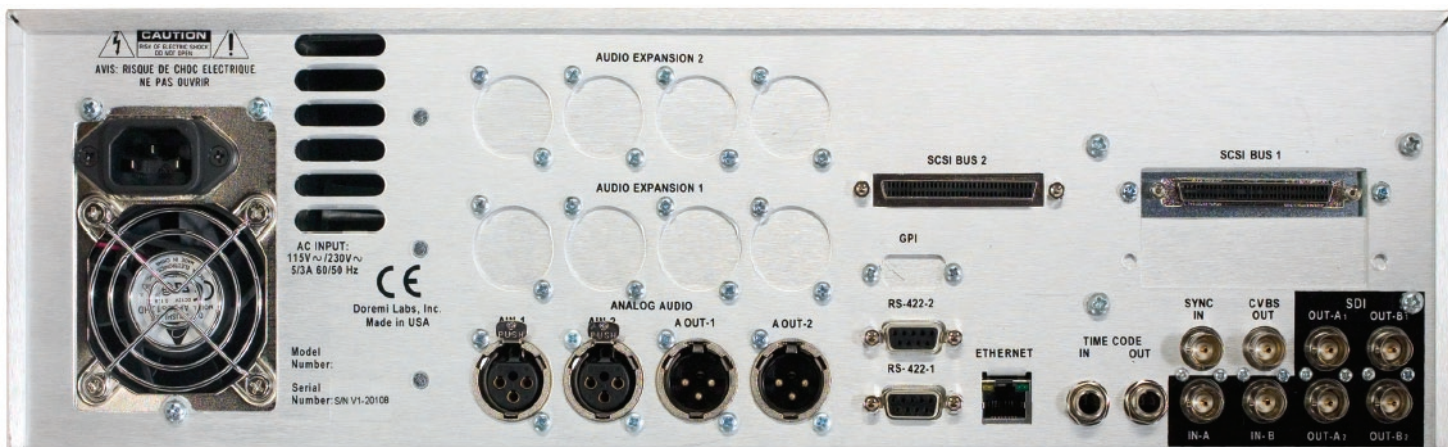
Video material can be recorded in one of three ways; simultaneous recording of both video streams, recording the two video streams in two separate passes, or by transferring TIFF files via Ethernet to the V1-HD.



Doremi Asset Manager

Doremi Asset Manager (DoremiAM) software transfers popular video file formats via Ethernet to the V1-HD and V1-UHD video servers. DoremiAM transfers video files such as QuickTime, MXF, AVI, and WMV to the V1 server's internal storage. Simply add the desired files or image sequences to DoremiAM's clip database and the software will transparently handle the synchronization and transfer of content to the V1.

Besides file transfers, DoremiAM provides transport controls such as shuttle, play and record. The operator can also use the software to create clips and playlists.



Rear panel of the V1-HD and V1-UHD

SPECIFICATIONS

VIDEO COMPRESSION

V1-HD JPEG2000 from 15 to 300 Mbits/sec up to 12-bit

V1-UHD Uncompressed 8-bit or 10-bit

VIDEO INTERFACE

Serial Digital Interface I/O

1.5Gbit/sec (SMPTE 292M, 296M and 274M)

800mVpp +/- 10%, 75 ohm, BNC

270Mbit/sec (SDI-SMPTE 259M) 800mVpp, 75 ohm, BNC

Dual-Link HD-SDI 4:4:4 (SMPTE 372M) (Option for the V1-UHD)

Composite Video Output

Video Sync Input Bi-level and Tri-level

AUDIO INTERFACE

Analog Audio I/O 2 Channels, up to 6 channels (Option)

electronically balanced @ +4dB into 600 ohm, XLR

(24-bit A/D & D/A, 48kHz sampling - uncompressed)

AES/EBU Digital Audio I/O (Option) up to 8 channels,

balanced 10Vpp, 110 ohm, XLR

Embedded Audio on SDI I/O up to 8 channels

FORMATS SUPPORTED 625 (50Hz) and 525 (60Hz)

720p (50, 60Hz), 1080i / 1080p (24, 25, 30Hz)

(2048 x 1080p and 2048 x 1080psf (24) (Optional for V1-UHD)

CONTROL INTERFACE

Ethernet 100BaseT, Gigabit Ethernet (Option)

Time Code I/O LTC, electronically balanced +4dB into 600 ohm,

1/4" jack, VITC, ATC

Serial Control inputs 2 RS-422 using P2, Odetics, VDCCP (Louth),

Pioneer DVD and Panasonic RS232C protocols

GPI 4 Input (Option)

Bi-Phase Bi-Phase input, DB-9

Power 110/115/230/240 VAC, +/- 10%, 50/60 Hz, 85 Watts

Dual Redundant Power Supply (Option)

Operating Temperature Range +10° to +40° C with rated performance

Dimensions 3RU - 5.25"H x 17"W x 15.25"D

Storage Media SCSI-equipped fixed / removable internal hard drives

External Storage via dual-SCSI to Doremi Labs' RAID5 chassis

Video Monitor LCD – front panel mounted (Option)

Specifications subject to change without notice. Some specifications and features listed are only available as part of specific packages or options.

Doremi Labs, Inc. Headquarters Burbank, California USA - tel 1 818 562-1101 - fax 1 818 562-1109 - www.doremilabs.com

Doremi Labs, Europe Sophia Antipolis, France - tel +33 (0)492 95 2830 - fax +33 (0)492 95 2831 - www.doremilabs.fr

Doremi Labs, Japan Tokyo, Japan - tel +81 3 3327 5735 - fax +81 3 3327 5736 - www.doremilabs.co.jp