

V1-HD 2K

HD Video Disk Recorder

V1-HD 2K

JPEG2000 2D & 3D, SD & HD Record and Playback | Video + Key
2K Dual Link 4:4:4 Recording | Super Widescreen
Create Clips, Loops & Playlists



The V1-HD 2K high definition video disk recorder offers the superior resolution of high definition video in a compact stand alone package.

Record and playback SD or HD video on internal removable drives. The V1-HD 2K features JPEG2000 video compression up to 300 Mb/s for visually lossless recording. HD video compression allows for over twelve hours of high quality video recording on just one removable hot-swap drive. Features include:

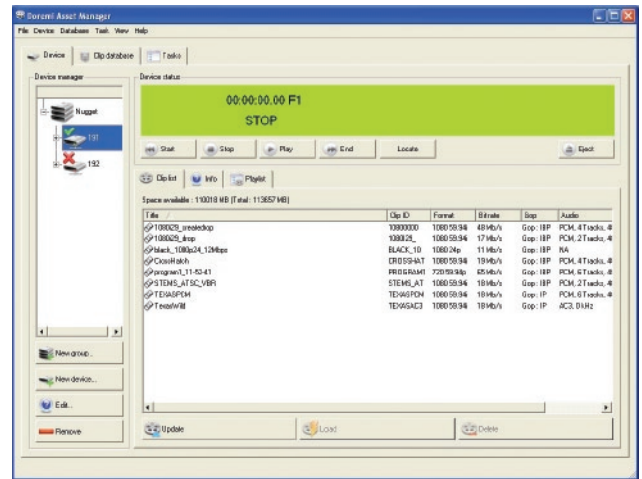
- Record SD and HD video
- High quality JPEG 2000 compression up to 300 Mb/s
- Create video clips, loops and playlists from the front panel
- Smooth fast and slow motion playback
- Video transitions fade, wipe and dissolve
- Frame accurate control via RS-422 or Ethernet using standard control protocols
- Transfer video files and still images via Ethernet
- 2K dual-link 4:4:4 recording 24p/24psf at 10 or 12 bit
- 1080p50 and 1080p60

doremi™

DoremiAM

Doremi Asset Manager (DoremiAM) software transfers popular video file formats via Ethernet to the V1-HD-2K. DoremiAM transfers video files such as QuickTime, MXF, AVI, and WMV to the V1 server's internal storage. Simply add the desired files or image sequences to DoremiAM's clip database and the software will transparently handle the synchronization and transfer of content.

Besides file transfers, DoremiAM provides transport controls such as shuttle, play and record. The operator can also use the software to create clips and playlists.



Mode of Operation

The V1 HD-2K provides several options for Local and Remote operation

- RS-422 Supports P2, VDCP (Louth), Odetics, Pioneer DVD and Panasonic RS232C protocols
- Ethernet Assign the V1 a unique IP address for remote control via Doremi's software utilities
- Front Panel Provides familiar VTR-like controls and the ability to create video clips and playlists



Specifications

VIDEO COMPRESSION

JPEG2000, 4:2:2-4:4:4
Bitrates from 15 to 300 Mb/s up to 12 bit

VIDEO INTERFACE

Serial Digital Interface I/O
1.5Gbit/sec (SMPTE 292M, 296M and 274M)
800mVpp +/- 10%, 75 ohm, BNC
270Mbit/sec (SDI-SMPTE 259M) 800mVpp, 75 ohm, BNC
Downconverted Composite Video Output for monitoring only
Video Sync Input Bi-level and Tri-level

AUDIO INTERFACE

Analog Audio I/O 2 Channels, up to 6 channels (Option)
electronically balanced @ +4dB into 600 ohm, XLR
(24-bit A/D & D/A, 48kHz sampling - uncompressed)
AES/EBU Digital Audio I/O (Option) up to 8 channels,
balanced 10Vpp, 110 ohm, XLR
Embedded Audio on SDI I/O up to 8 channels

STORAGE

One 300GB SCSI removable internal hard drive
Also available with external storage

FORMATS SUPPORTED

625 (50Hz) and 525 (60Hz)
720p (50, 60Hz), 1080i (24, 25, 30Hz)
1080p (24, 25, 30, 50, 60Hz)

CONTROL INTERFACE

Ethernet 100BaseT (1000BaseT optional)
Time Code I/O LTC, electronically balanced +4dB into 600 ohm, 1/4" jack, VITC, ATC
Serial Control Inputs 2 RS-422 using P2, Odetics, VDCP (Louth), Pioneer DVD and Panasonic RS232C protocols
GPI 4 Input (Option)
Bi-Phase Bi-Phase input, DB-9

Power 110/115/230/240 VAC, +/- 10%, 50/60 Hz, 85 Watts
Operating Temperature Range +10° to +40° C with rated performance
Dimensions 3RU - 5.25"H x 17"W x 15.25"D
(13.35cm x 43cm x 38cm)