

GHX-10™

Universal Cross Converter

**Universal Inputs | Universal Outputs | HD to 2048 Upconversion
Genlock Input | Audio Support | Software Upgrade via SD Card or USB**



GHX-10™

The GHX-10 features HDMI, DVI, and SDI connectors that allow for any input to be converted to any output format or scan rate. It supports both SD and HD video and employs high quality 12 bit bicubic interpolation to ensure the highest quality picture.

Doremi has listened to the demands of video professionals and included many advanced features such as audio support, sync output and Genlock. The GHX-10 also features the latest video technology in the form of dual-link SDI and 3Gb/s SDI connectors for 4:4:4 2K film resolution.

Thanks to its comprehensive video format support, the GHX-10 can tackle many conversion tasks. It can be used as a computer DVI to HD-SDI converter, an HDMI resolution converter, or as an HD video upconverter or downconverter and much more.

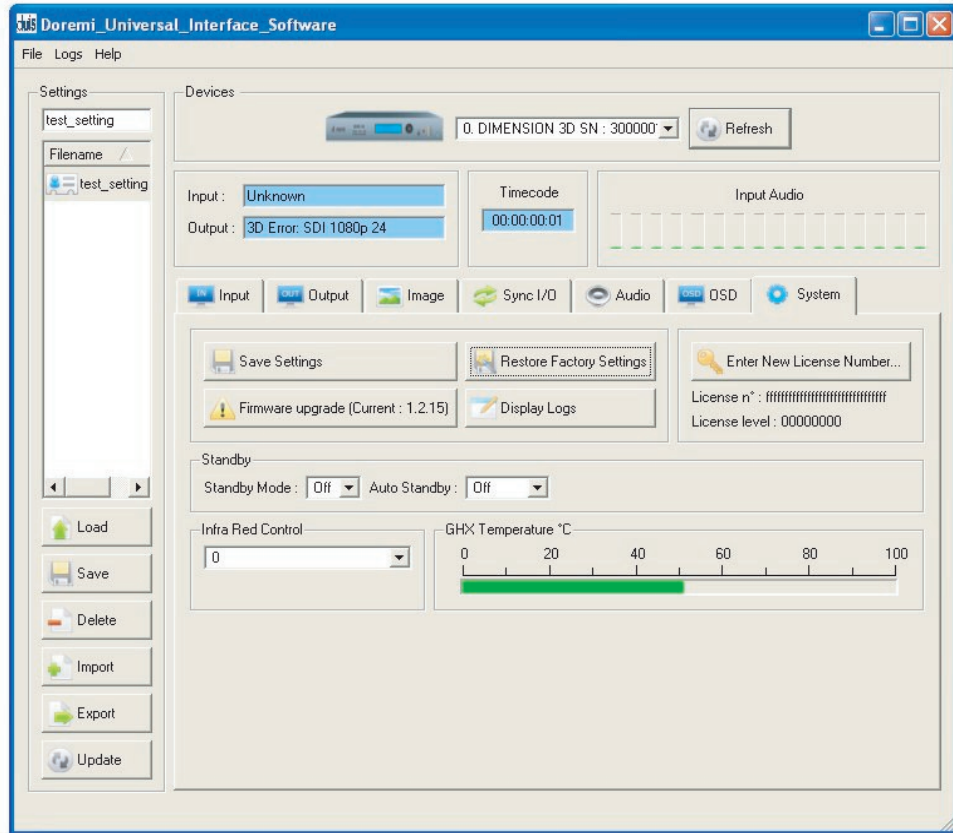
The GHX-10 supports up to 8 channels of AES, HDMI and SDI audio. The audio can be embedded or de-embedded to the separate AES BNC connectors or delayed to match the video.

A two-line LCD display and function knob simplify navigation through the menus. A USB connection for remote operation and an infrared control are also provided. Firmware can be upgraded via SD card or USB.



doremi™

Doremi Universal Interface Software



The GHX Control Panel Software (DUIS) consists of a GUI that can control one or more GHX-10 devices connected to your workstation.

SPECIFICATIONS

INPUTS

- HDMI
- Single or Dual Stream HDSDI (For Dual HDSDI, the two inputs are required to be locked in accordance with SMPTE 372M i.e. genlocked with no more than two - three pixels of difference)

OUTPUTS

- Single or Dual Stream HDSDI
- Single HDMI Output with EDID detection

VIDEO

- SDSDI, 720, 1080 and 2K (2048X1080 4:4:4 at 12 bits) video formats supported for SDI input and output
- All standard graphic or video resolutions up to 1920 x 1200 for HDMI/DVI input and output

AUDIO

- 16 channels over HDSDI (in and out)
- 8 channels over HDMI (in and out)
- 8 channels on AES connections (in and out)
- Audio delay can be set from the GUI, front panel or IR Remote Control -1 to +2 frames

FEATURES

- Auto detect content format
- One frame throughput delay
- Front Panel and PC application to set up unit.
- Front Panel Status Indicators.
- Two line LCD display and function knob simplify the menu navigation
- Infrared remote control or USB connection for remote operation
- Firmware upgrade via SD card or USB