

**Event & Presentation Player
for 2D, 3D, HD, 2K & 4K**

DSV-J2

Dual Format Playback

JPEG2000 MXF
MPEG2 MXF

2D, 3D and Stereoscopic Playback

HD, 2K & 4K Resolution Playback

Playback of 4k files at 4k
resolution via Doremi's
optional MB-4K processor

Touchscreen

Touchscreen front panel
display with intuitive GUI



The DSV-J2 is a high quality 2D, 3D, and Stereoscopic digital playback device designed for large screen venues. The DSV-J2 supports resolutions up to 4K and features MPEG2 MXF and visually lossless JPEG2000 MXF file playback.

The DSV-J2 supports playback in High Definition (1920x1080), 2K (2048x1080) and optional 4K (4096x2160). 3D playback is supported in HD and 2K resolutions only. Super widescreen playback (Stereoscopic) is achieved by sending a unique SDI stream to each of two projectors.

The DSV-J2 features 8 channels of high quality uncompressed audio (48 KHz, 24 bits) via balanced digital AES/EBU or optional analog audio.

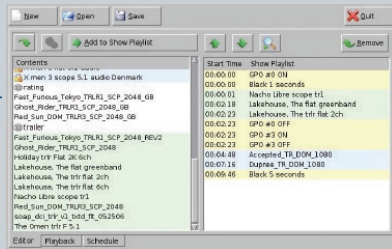
The DSV-J2 provides frame accurate LTC Time Code output to synchronize external equipment.

Each DSV-J2 includes the CineLister software that provides intuitive playlist capability with multi-day scheduling

**Designed by the Digital
Cinema Market Leader**

doremi

SOFTWARE



Event Editing Screen

CineLISTER Software

CineLISTER allows the user to build & execute playlists with multiple day, week, and month scheduling.

4K PLAYBACK



Doremi Labs' optional MB-4k media block processor takes the dual-link HD-SDI outputs of the DSV-J2 and outputs a 4k resolution (4096x2160) image via 8 dual-link HD-SDI or four DVI connectors.

SPECIFICATIONS

PLAYBACK

JPEG2000 HD, 2K or 4K content file playback at HD, 2K resolution
12-bit 444 (XYZ, RGB) on dual link HD-SDI (XYZ, RGB), and on DVI-D (optional)
MPEG2 MXF HD content file playback
JPEG2000 4K file playback at 4K resolution (optional)
3D - JPEG2000 content and 48p playback via Dual 10-bit 422 (YPbPr/YCxCz)

INTERFACE

Gigabit Ethernet for file transfer
Gigabit Ethernet for control
USB2.0 for content loading

STORAGE

1000GB of RAID5 storage

AUDIO

AES/EBU 8 channels
-Single DB-25 connector
Analog Audio (optional)
-Balanced or Unbalanced 8 channels
-Single DB-25 connector external 1RU chassis

GPIO

8 optically isolated inputs
8 open collector outputs

TIMECODE

LTC time code output on BNC

USER INTERFACE

Front panel touchscreen (640x480)
with visual keyboard

VIDEO OUTPUT

Dual link HD-SDI
Single link HD-SDI (two provided)
DVI-D (optional external converter)

OUTPUT RESOLUTION

2048 x 1080 and 1920 x 1080
at 24, 25, 29.97 frame rates
12 Bit 4:4:4 via dual link HD-SDI

2048 x 1080 and 1920 x 1080
at 48, 50, 59.94 frame rates
10bit 4:2:2 via dual link HD-SDI

1280 x 720
at 48, 50, 59.94 frame rates
12bit 4:4:4 via dual link HD-SDI

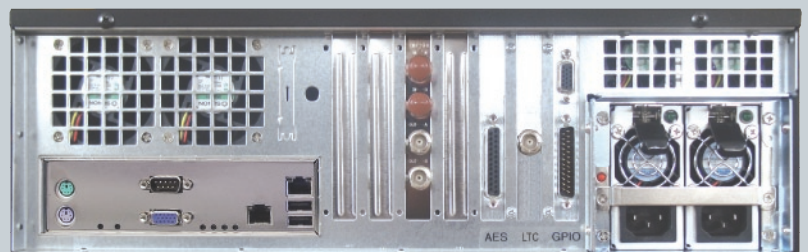
POWER

Dual-Redundant Power Supply
100-240VAC 50-60Hz (350W max)

DIMENSIONS

3U Rack Unit
20.5" x 19" x 5.25" inch
(52 x 45 x 13 cm)

Rear panel



doremi

Doremi Labs Inc - Burbank, California USA
tel 1-818 562-1101 - www.doremilabs.com
Doremi Technologies - Sophia Antipolis, France
tel +33 (0)492 952 830 - www.doremitechno.com
Doremi Labs LLC - Japan Tokyo, Japan
tel +81 3 3370-0401 - www.doremilabs.co.jp