

# DSV-J2™

## Event & Presentation Player

2D / 3D / HD / 2K / 4K Playback | JPEG2000 & MPEG2 MXF Playback



The DSV-J2 is a high quality 2D, 3D, and Stereoscopic digital playback device designed for large screen venues. The DSV-J2 supports resolutions up to 4K and features MPEG2 MXF and visually lossless JPEG2000 MXF file playback.

The DSV-J2 supports playback in High Definition (1920x1080), 2K (2048x1080) and optional 4K (4096x2160). 3D playback is supported in HD and 2K resolutions only. Super widescreen playback (Stereoscopic) is achieved by sending a unique SDI stream to each of two projectors.

The DSV-J2 features 8 channels of high quality uncompressed audio (48 KHz, 24 bits) via balanced digital AES/EBU or optional analog audio.

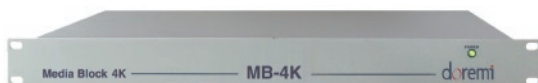
The DSV-J2 provides frame accurate LTC Time Code output to synchronize external equipment.

Each DSV-J2 includes the CineLister software that provides intuitive playlist capability with multi-day scheduling

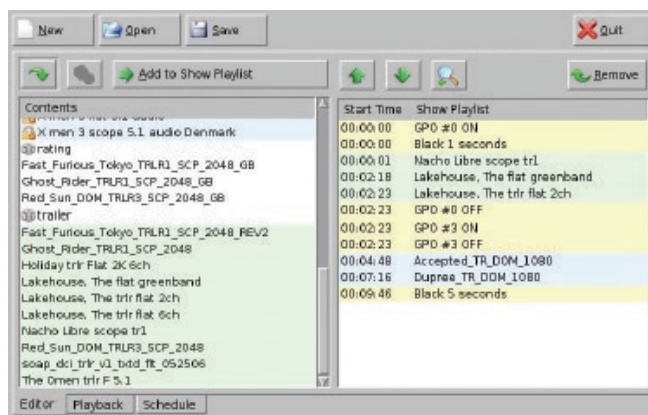
**The Best in Digital Playback Servers**

**doremi**™

### 4K Playback



Doremi Labs' optional MB-4K media block processor takes the dual-link HD-SDI outputs of the DSV-J2 and outputs a 4K resolution (4096x2160) image via 8 dual-link HD-SDI or four DVI connectors.



### CineLister Software

CineLister allows the user to build & execute playlists with multiple day, week, and month scheduling.

## SPECIFICATIONS

### PLAYBACK

- JPEG2000 HD, 2K or 4K content file playback at HD, 2K resolution
- 12-bit 444 (XYZ, RGB) on dual link HD-SDI (XYZ, RGB), and on DVI-D (optional)
- MPEG2 MXF HD content file playback
- JPEG2000 4K file playback at 4K resolution (optional)
- 3D - JPEG2000 content and 48p playback via Dual 10-bit 422 (YPbPr/YCxCz)

### INTERFACE

- Gigabit Ethernet for file transfer
- Gigabit Ethernet for control
- USB2.0 for content loading

### STORAGE

- 1000GB of RAID5 storage

### AUDIO

- AES/EBU 8 channels
- Single DB-25 connector
- Analog Audio (optional)
- Balanced or Unbalanced 8 channels
- Single DB-25 connector external
- 1RU chassis

### GPIO

- 8 optically isolated inputs
- 8 open collector outputs

### TIMECODE

- LTC time code output on BNC

### USER INTERFACE

- Front panel touchscreen (640x480)
- with visual keyboard

### VIDEO OUTPUT

- Dual link HD-SDI
- Single link HD-SDI (two provided)
- DVI-D (optional external converter)

### OUTPUT RESOLUTION

- 2048 x 1080 and 1920 x 1080
- at 24, 25, 29.97 frame rates
- 12 Bit 4:4:4 via dual link HD-SDI

- 2048 x 1080 and 1920 x 1080
- at 48, 50, 59.94 frame rates
- 10bit 4:2:2 via dual link HD-SDI

- 1280 x 720
- at 48, 50, 59.94 frame rates
- 12bit 4:4:4 via dual link HD-SDI

### POWER

- Dual-Redundant Power Supply
- 100-240VAC 50-60Hz (350W max)

### DIMENSIONS

- 3U Rack Unit
- 20.5" x 19" x 5.25" inch
- (52 x 45 x 13 cm)

