

DCP-2K4™

Digital Cinema Server

DCP-2K4™

Multi-File Playback | 3D Playback | 2K & 4K Playback | Enhanced Security
Captioning Device Control | DVD & Removable SATA Ingest Inputs | CineLister



The DCP-2K4 cinema server is a modification of the DCP-2000, which was the first commercially available server capable of playing JPEG2000 digital movies conforming to DCI specifications.

They both provide superior reliability, image quality and an unmatched feature set.

The DCP-2K4's 4U configuration includes DVD-ROM and removable SATA ingest inputs that give exhibitors additional flexibility on how they receive and ingest content at the screen level.

Like the DCP-2000, the DCP-2K4 plays JPEG2000 and MPEG2 MXF files. It also supports all of the latest 3D technologies including REAL D, XpanD, Sensio 3D, Dolby 3D, and dual-projectors 3D playback. External control of captioning devices and 4K resolution playback are also available.

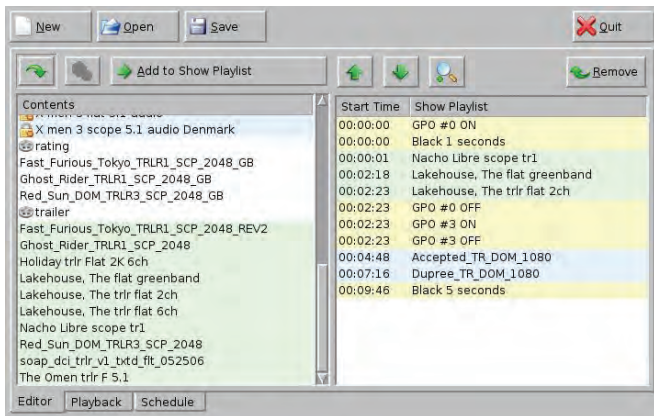
Each DCP-2K4 server includes the CineLister software utility that provides effortless scheduling and playlist administration. Playlists can include both JPEG2000 and MPEG2 movie files, and pre-show content files.

Doremi servers are by far the most installed digital cinema server with over 5500 units worldwide.

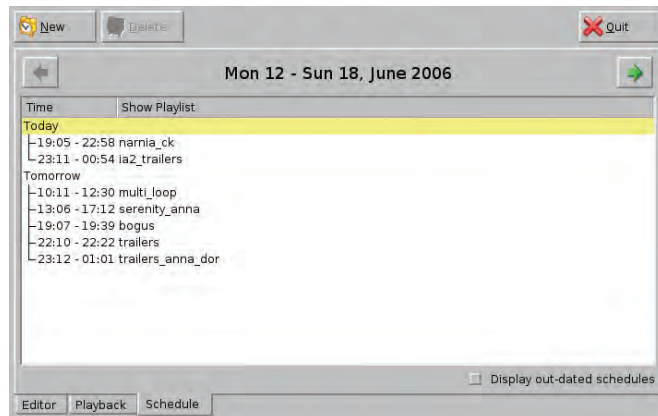
Any Screen, Any Projector, Any 3D System.

doremi
cinema™

CineLISTER SOFTWARE



Event Editing Screen



Play List Scheduling Screen

CineLISTER allows the operator to build and play composition playlists as well as full session playlists. Playlists can include both JPEG2000 and MPEG2 movie files and pre-show content files. The graphic user interface simplifies the management of image files and creation of new image clips. CineLISTER's extensive playlist creation capability can be used for on-line playback and play list scheduling.

SPECIFICATIONS



PLAYBACK

JPEG2000 2K or 4K movie and pre-show file playback at 2K resolution
 12-bit 444 (XYZ, RGB) on dual link HD-SDI
 MPEG2 MXF interop movie, pre-show and alternative content file playback
 JPEG2000 4K movie file playback at 4K resolution (option)
 3D - JPEG2000 movies and 48p playback via Dual 10-bit 422 (YPbPr/YCxCz)

SECURITY

TI's CineLink II Strong Link Encryption
 Thomson's NexGuard Forensic Watermarking
 Philips' CineFence Forensic Watermarking
 FIPS 140-2 Level 3 Security Certified

INTERFACE

Gigabit Ethernet for file transfer
 Gigabit Ethernet for control & subtitling
 RS-422 serial control port
 USB2.0
 External control of captioning devices
 WGBH & PCS (Option)

STORAGE

Up to 2TB of RAID5 storage

AUDIO

AES/EBU audio 16 channels
 -Single DB-25 connector
 Balanced or unbalanced analog audio 8 channels
 (two options available)
 -Single DB-25 connector internal board
 -External digital audio (DB-25) to analog audio
 converter in a 1RU rack mount chassis

GPIO

8 optically isolated inputs
 8 open collector outputs

INGEST INPUTS

USB
 Ethernet
 CRU SATA 2
 DVD-ROM

VIDEO OUTPUT

Dual link HD-SDI
 with physical link encryption

OUTPUT RESOLUTION

-Dual link
 2048 x 1080 24p 4:4:4 12-bit
 -Two single links
 2048 x 1080 24p 4:2:2 10-bit

POWER

Dual-Redundant Power Supply
 100-240VAC 50-60Hz (2x400W)

DIMENSIONS

4U Rack Unit
 19" x 22" x 7" inch
 (48 x 56 x 19 cm)
 Weight 48lbs/22Kg

Doremi Cinema LLC, Burbank, California USA
 tel +1-818 562-1101 - www.doremicinema.com
 Doremi Labs, Europe Sophia Antipolis, France
 tel +33 (0) 492 952 830 - www.doremilabs.fr
 Doremi Labs LLC - Japan Tokyo, Japan
 tel +81 (0) 3 3370 0401 - www.doremilabs.co.jp

